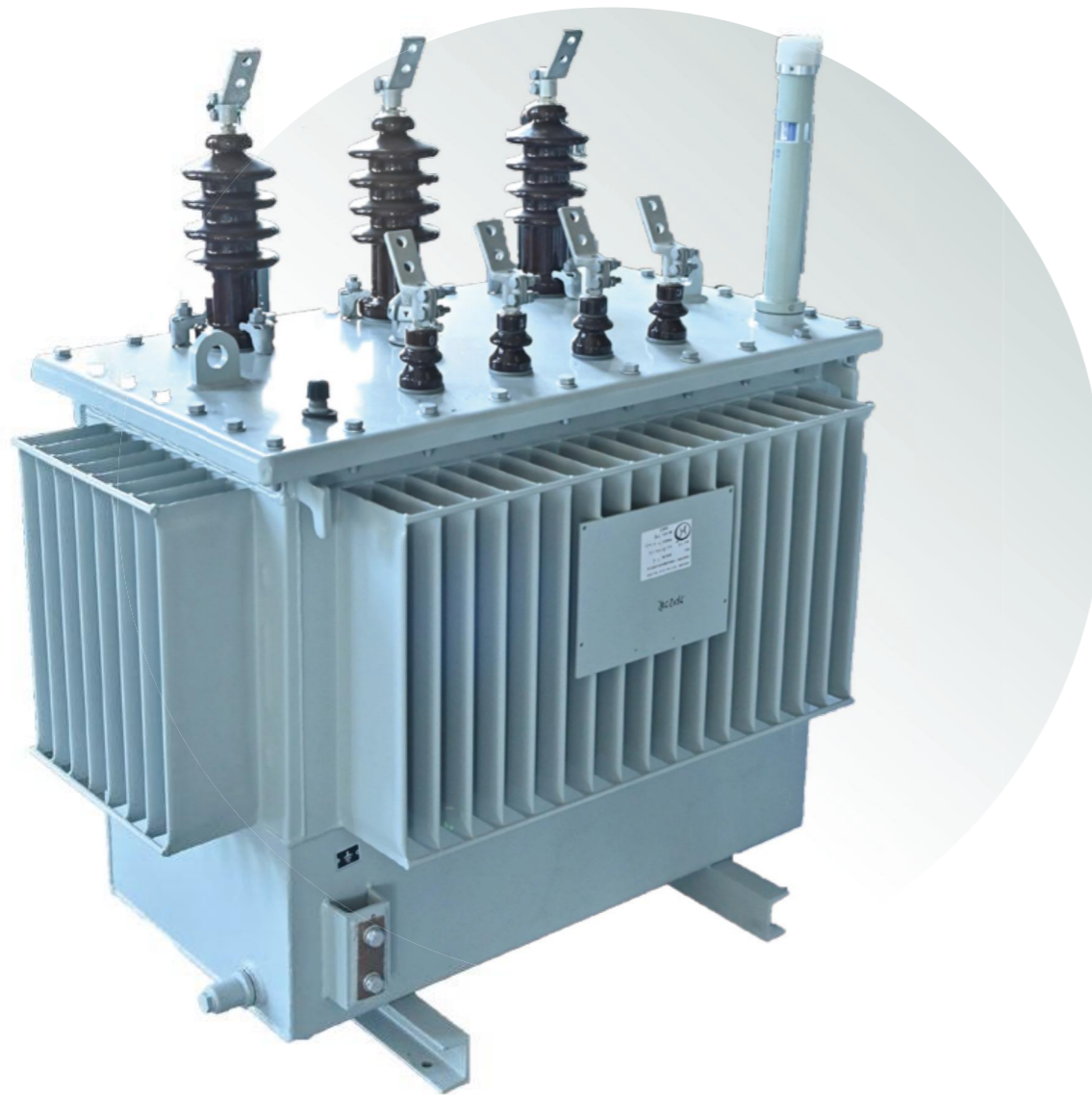


10 kV Oil-Immersed Transformer



Model meaning

S Three-phase	13、20、22 Performance level code
M Full	Rated capacity/voltage level

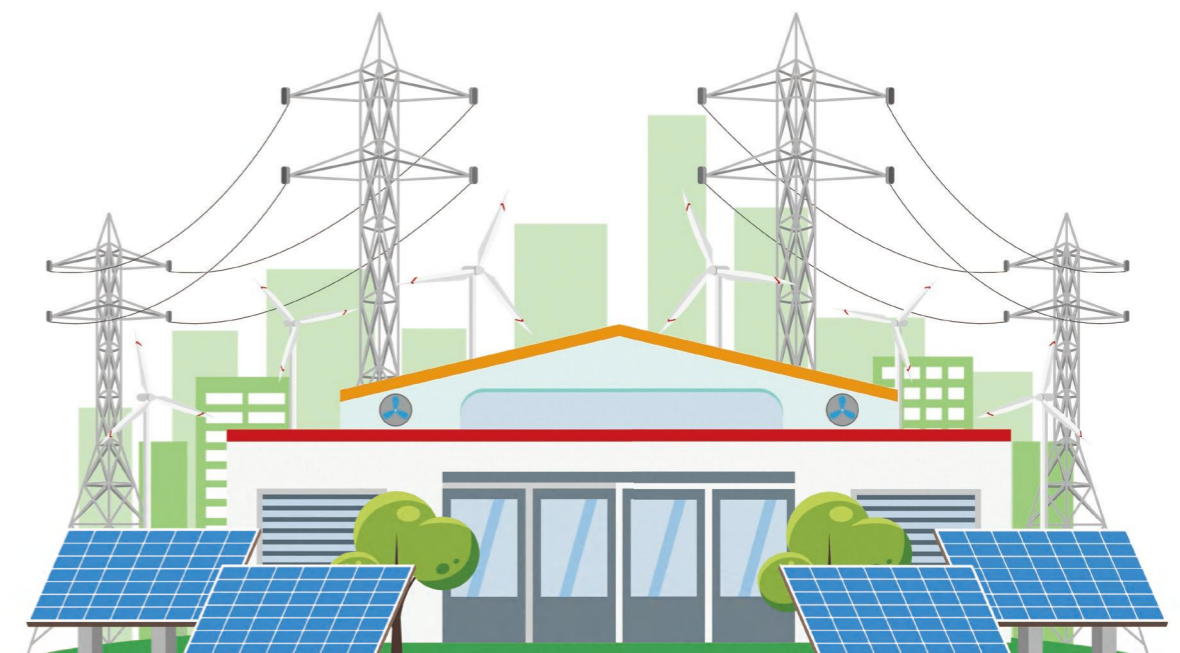
Product description

The transformer core is made of high-efficiency, low-loss, premium cold-rolled silicon steel sheets, assembled with full mitered joints and processed by intelligent tooling equipment for precise cutting and stacking. This design significantly reduces no-load loss, no-load current, and noise. The windings are made of high-purity oxygen-free copper with a low current density design, effectively reducing load loss. High-quality laminated wood clamping structures are used for mechanical fastening, while interlayer insulation adopts high-grade dotted pressboard with adhesive coating as the insulating material. The transformer body is structurally robust, capable of withstanding transportation shocks and vibrations without displacement.

According to customer requirements, the transformer can be equipped with a full range of accessories, such as Buchholz relays, integrated three-in-one protection devices, oil pressure sudden-acting relays, and more. The overall performance of this product reaches the domestic advanced level, and the series complies with the GB 20052 energy efficiency standard.

Features

- ⦿ Three-proof performance (moisture-proof, mildew-proof, and salt-fog resistant)
- ⦿ Three-protection functions (temperature, gas, and pressure)
- ⦿ Reliable operation and easy maintenance
- ⦿ Suitable for use in 10kV outdoor networks or inside prefabricated substations



10KV S13 Type Oil-immersed Power Transformer Performance Parameters

Type	Rated voltage combination			Conect ion symbol	o-load Current (%)	o-load Loss (K)	Load Loss (K)	Impedance voltage (%)	
	H.V (KV)	Tapping range of HV (%)	L.V (KV)						
S13-M-30	6	±2 ×2.5	0.4	Dyn11 Yyn0	1	0.08	0.63/0.60	4.0	
S13-M-50					0.95	0.10	0.91/0.87		
S13-M-63					0.95	0.11	1.09/1.04		
S13-M-80					0.9	0.13	1.31/1.25		
S13-M-100					0.85	0.15	1.58/1.5		
S13-M-125					0.85	0.17	1.89/1.8		
S13-M-160					0.8	0.20	2.31/2.2		
S13-M-200					0.6	0.24	2.73/2.6		
S13-M-250					6.3	0.6	0.29		3.2/3.05
S13-M-315					10	0.55	0.34		3.83/3.65
S13-M-400					10.5	0.55	0.41	4.52/4.3	
S13-M-500					11	0.5	0.48	5.41/5.15	
S13-M-630					0.5	0.57	6.2	6.0	
S13-M-800					0.45	0.70	7.5		
S13-M-1000					0.45	0.83	10.3		
S13-M-1250					0.35	0.97	12		
S13-M-1600					0.35	1.17	14.5		
S13-M-2000					0.3	1.36	18.3		
S13-M-2500					0.3	1.60	21.2		

10KV S20 Type Oil-immersed Power Transformer Performance Parameters

Type	Rated voltage combination			Conect ion symbol	o-load Current (%)	o-load Loss (K)	Load Loss (K)	Impedance voltage (%)	
	H.V (KV)	Tapping range of HV (%)	L.V (KV)						
S20-M-30	6	±2 ×2.5	0.4	Dyn11 Yyn0	0.80	0.07	0.505/0.480	4.0	
S20-M-50					0.75	0.09	0.730/0.695		
S20-M-63					0.75	0.1	0.870/0.830		
S20-M-80					0.70	0.115	1.050/1.000		
S20-M-100					0.65	0.135	1.265/1.200		
S20-M-125					0.65	0.15	1.510/1.440		
S20-M-160					0.6	0.18	1.850/1.760		
S20-M-200					6	0.50	0.215		2.185/2.080
S20-M-250					6.3	0.50	0.26		2.560/2.440
S20-M-315					10	0.45	0.305		3.065/2.920
S20-M-400					10.5	0.45	0.37	3.615/3.440	
S20-M-500					11	0.40	0.43	4.330/4.120	
S20-M-630					0.40	0.51	4.960	4.5	
S20-M-800					0.35	0.63	6.000		
S20-M-1000					0.35	0.745	8.240		
S20-M-1250					0.30	0.87	9.600		
S20-M-1600					0.30	1.05	11.600		
S20-M-2000					0.25	1.225	14.640	5.0	
S20-M-2500					0.25	1.44	14.840		

10KV S22 Type Oil-immersed Power Transformer Performance Parameters

Type	Rated voltage combination			Conect ion symbol	o-load Current (%)	o-load Loss (K)	Load Loss (K)	Impedance voltage (%)		
	H.V (KV)	Tapping range of HV (%)	L.V (KV)							
S22-M-30	6	±2 ×2.5	0.4	Dyn11	0.80	0.065	0.455/0.430	4.0		
S22-M-50					0.75	0.08	0.655/0.625			
S22-M-63					0.75	0.09	0.785/0.745			
S22-M-80					0.70	0.105	0.945/0.900			
S22-M-100					0.65	0.12	1.140/1.080			
S22-M-125					0.65	0.135	1.360/1.295			
S22-M-160					0.60	0.16	1.665/1.585			
S22-M-200					0.50	0.19	1.970/1.870			
S22-M-250				6.3	Yyn0	0.4	0.50	0.23	2.300/2.195	4.5
S22-M-315				10			0.45	0.27	2.760/2.630	
S22-M-400				10.5			0.45	0.33	3.250/3.095	
S22-M-500				11			0.40	0.385	3.900/3.710	
S22-M-630				0.40			0.46	4.460		
S22-M-800				0.35			0.56	5.400		
S22-M-1000				0.35			0.665	7.415		
S22-M-1250				0.30			0.78	8.640		
S22-M-1600	0.30	0.94	10.440	5.0						
S22-M-2000	0.25	1.085	13.180							
S22-M-2500	0.25	1.28	13.360							

